



Position Description

MINI-EXPEDITION LEAD

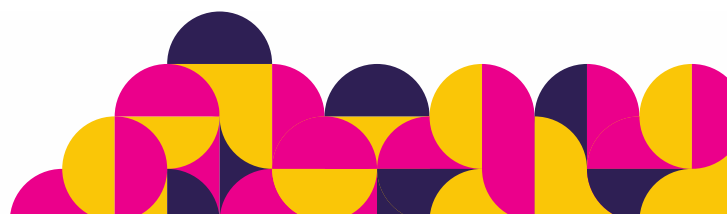
The Purpose of the Scout Movement is to contribute to the education of young people in achieving their full physical, intellectual, emotional, social, and spiritual potentials as individuals, as responsible citizens and as members of their local, national, and international communities.

Scouts WA is a child safe organisation with zero-tolerance for any harm, abuse, or neglect. Scouts WA values the diversity of our members, including gender, sexuality, race, religion, and ability.

Scouting focuses on youth members fully engaging with the program by supporting and managing those in adult and youth leadership roles.

OneCamp 2023 in a new initiative of Scouts WA that will provide a unique major event experience for members across all sections from Joey Scouts to Rover Scouts.

Role objective	Responsible for the Plan>Do>Review cycle for a OneCamp Mini-Expedition.
Role overview	<p>As a key member of the Program Team, you will collaborate with a Program Director to Plan>Do>Review a OneCamp Mini-Expedition. A Mini-Expedition is a two day offsite activity for Scouts. We are planning 8 Mini-Expeditions each with 15-30 youth participants. Each Mini-Expedition will be run three times over six days from Wednesday 12 April till Monday 17 April 2023, inclusive.</p> <p>This role is open to youth members wishing to develop their leadership and event management skills.</p>
Specific responsibilities	<ul style="list-style-type: none"> • Complete a Mini-Expedition Plan using the template provided. • Recruit and lead a team of supporting adults to assist you to Plan>Do>Review the Mini-Expedition. • Ensure any expenditure is in line with the Mini-Expedition budget approved by the Event Director. • Work with the Transport Lead to ensure all transport arrangements are in place before the event. • Work with the Catering Services Director to ensure all catering arrangements are in place before the event. • Produce an information pack for youth members participating in your Mini-Expedition. • Review and plan for any specific health and wellbeing needs of youth participants on your Mini-Expedition. • In conjunction with the OneCamp Unit line leaders, support the health and wellbeing of youth participants on your Mini-Expedition. • Follow the OneCamp 2023 incident reporting framework and escalate any issues as necessary to the relevant personnel. • Complete the Risk Management Plan for your Mini-Expedition. • Attend meetings of the Program Team as necessary.
Key stakeholders	<p>Reports to:</p> <ul style="list-style-type: none"> • Program Director <p>Works alongside:</p> <ul style="list-style-type: none"> • Other Mini-Expedition Leads • Catering Service Team • Health & Wellbeing Team • OneCamp Unit Line Leaders <p>Roles that report to this role:</p> <ul style="list-style-type: none"> • Mini-Expedition Team Members

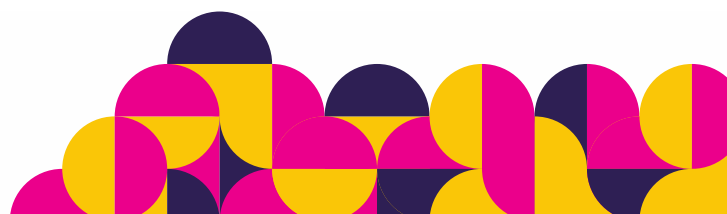




Position Description

MINI-EXPEDITION LEAD

<p>Personal attributes</p>	<p><u>Attitude</u></p> <ul style="list-style-type: none"> • Have enthusiasm for the Vision, Aim, and Principles of Scouting • Be a good role model to Youth and Adult Members • Have enthusiasm for the One Program continuum • Be passionate about the Youth Leading Adults Supporting concept • Adhere to the Scouts Australia Code of Ethics and Conduct <p><u>Skills</u></p> <ul style="list-style-type: none"> • Be able to communicate efficiently • Be able to manage competing priorities in a changing environment • Be able to build relationships and trust with stakeholders across the event • Be able to use the Microsoft Office suite <p><u>Knowledge</u></p> <ul style="list-style-type: none"> • Understand and commit to the Scout Promise and Law • Understand the Youth Program
<p>Qualifications and experience</p>	<ul style="list-style-type: none"> • Previous experience with the Scout section
<p>Time commitment</p>	<p>You will be required to commit time for this role. From August 2022, your commitment will be around 1 hour a week to plan your expedition.</p> <p>You will need to be available to attend the full duration of your Mini-Expedition in April 2023.</p> <p>Applicants should ensure they have the flexibility in their time to be able to accommodate this contribution considering their current commitments. There is scope to craft the role to fit into your schedule. This is a volunteer position.</p>



Event Team Structure Chart

